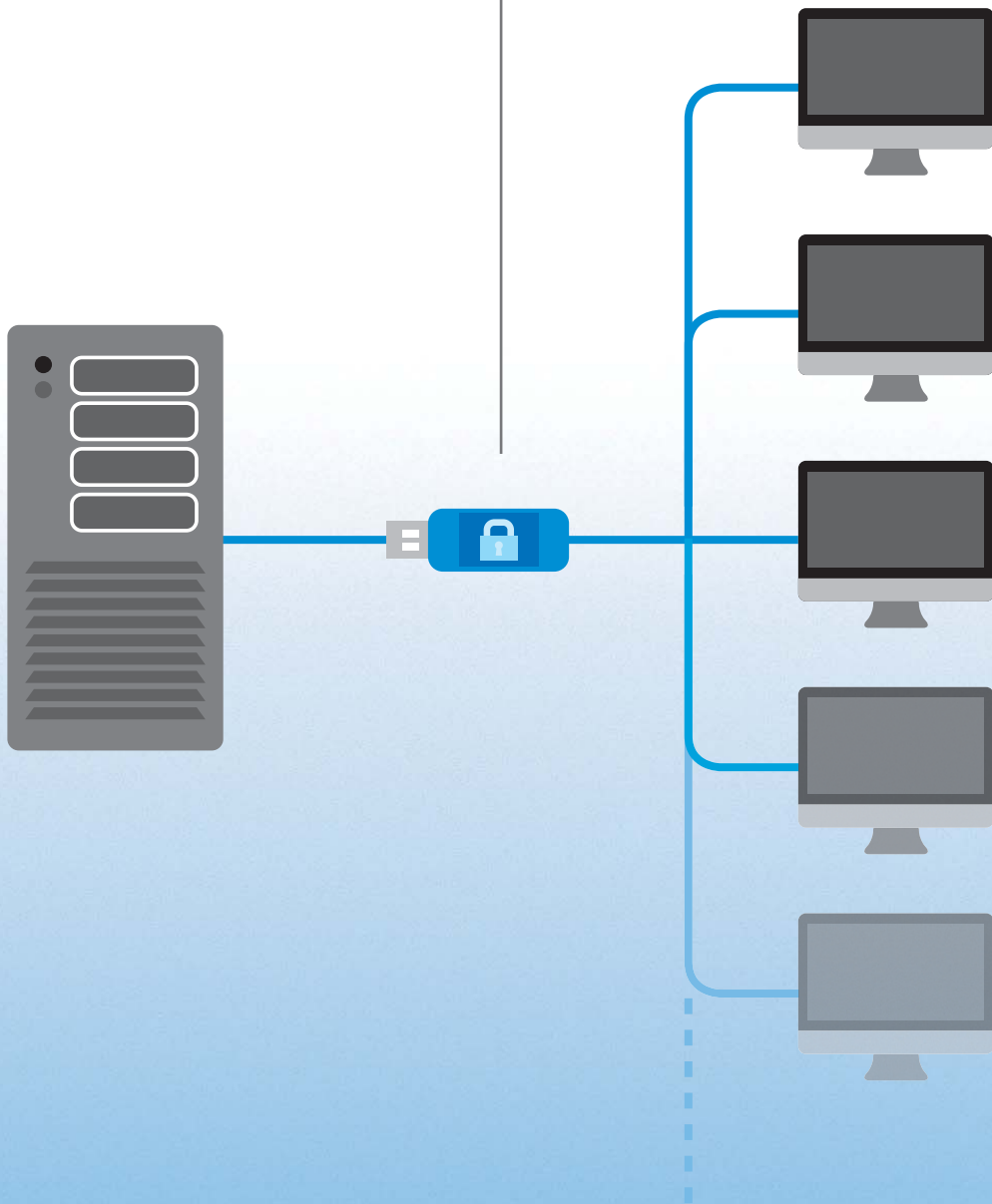


OCULUS Floating License Key



FLOATING LICENSE KEY

License management for software options

Notes about these instructions

The working steps described here represent a supplement to existing OCULUS devices. The safety instructions given in the instruction documents accompanying the devices must be complied with. All the information for handling the device can be found there. Deviations between the illustrations shown here and the device actually supplied are possible due to ongoing developments.

The illustrations shown may vary depending on which operating system you use.

If you have any queries or would like additional information about your device, do not hesitate to call or send us a mail or a fax. Our service team will gladly assist.

OCULUS Optikgeräte GmbH



OCULUS is certified according to DIN EN ISO 13485, setting high standards of quality for the development, manufacture, quality assurance and service of the entire range of products.

Table of contents

1	Delivery	1
2	About these instructions.....	1
3	Safety instructions.....	4
4	Designated use.....	5
5	Program requirements.....	5
6	Mode of function	6
7	Using Floating License Key Licenses.....	7
7.1	Using the Floating License Key on a single computer	7
7.2	Using the Floating License Key in a network	7
7.3	Using demo licenses	8
7.4	Checking licenses	9
7.5	Ordering software options.....	11
7.5.1	Generating an order list.....	11
7.5.2	Activating new software options.....	14
7.5.3	Telephone order.....	15
7.6	Displaying the Licenses in the Device Software.....	17
8	Installing in a network.....	20
8.1	Installing software	21
8.2	Configuring OcuLicenseServer.....	24
8.2.1	Changing port.....	24
8.2.2	Displaying IP Address.....	24
8.2.3	Setting autostart.....	25
8.2.4	Selecting language.....	25
8.2.5	Restarting Floating License Key.....	25
8.2.6	Saving settings	25
8.2.7	Registering as service	26
8.3	Configuring the firewall	26
8.3.1	Configuring ports.....	26
8.3.2	Allowing application-based communication.....	27
8.4	Connecting the client computer with the Floating License Server.....	28
8.5	Access to the Floating License Key from outside the network	29
9	Manufacturer's and service address.....	30

1 Delivery



- Floating License Key: 77900
- Manual Floating License Key: SI/77900/.../en

2 About these instructions

These instructions describe how to use the Floating License Key and the OcuLicenseServer software in connection with the OCULUS examination software. It contains three parts.

Part 1: for users


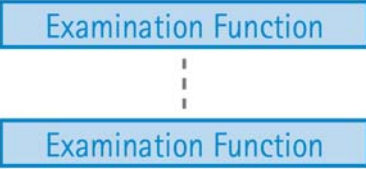

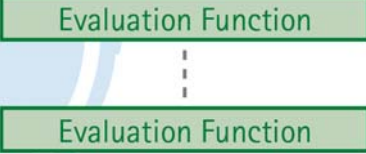
- Using the licenses of the Floating License Key, [sect. 7, page 7](#)
- Ordering licenses, [sect. 7.4, page 9](#)

Part 2: only for trained retailers and network administrators

- Integrating the Floating License Key into the network, [fig. 8, page 20](#)

Description of terms

Term	Description
Floating License Key with OcuLicenseServer- software	The floating license key comes included with every OCULUS unit. It contains the evaluation functions for the basic software package and the optional ones.
Basic software package	A combination of examination and evaluation functions with Patient Data Management that you'll get with each newly purchased OCULUS unit.

Term	Description
	<p>OCULUS device software Each OCULUS unit comes preloaded with specialized software specific to the device. This OCULUS device software features examination and evaluation functions, plus Patient Data Management.</p>
	<p>Examination function A function that is permanently attached to a specific device and its software.</p>
	<p>Patient Data Management (PDM) The PDM system manages patient and examination data. The examination data can be viewed on the local network from any workstation that has PDM installed on it; no additional licenses are needed. PDM is included in every basic software package.</p>
	<p>Evaluation function A function that can be used from any observation point with device software.</p>
<p>Optional examination functions</p>	<p>For a current overview of device software and examination and evaluation functions, visit OCULUS online at http://www.oculus.de/de/floating-license-key/</p>
<p>Optional examination functions</p>	<p>An examination function that is not included in the basic software package of a device. You can obtain a license to use an optional examination function. Examination functions cannot be ordered using a floating license key. You can order them using a code and activate them directly on the OCULUS unit.</p>
<p>Optional evaluation function</p>	<p>An evaluation function that is not included in the basic software package of a device. You can obtain a license to use an optional evaluation function. Licenses for the evaluation functions can be ordered and activated using the floating license key</p>
<p>Licenses</p>	<p>Each OCULUS unit comes equipped with a basic software package that is specific to that device. We also offer software options that can be added onto this basic software package. These options require licenses. The these licenses are ordered depends on whether you're adding an examination function or an evaluation function.</p>

Term	Description
License type	Describes the type of license. In addition to the purchased licenses, OCULUS uses the Floating License Key to provide you with demo licenses for all other software options that match your instrument.
<ul style="list-style-type: none"> ■ „Floating“ 	Non-time-limited use on any computer or via the network
<ul style="list-style-type: none"> ■ „Usage“ 	Demo license Use limited to a particular number of utilisations. If you load an examination for a patient, you can use a software option within this examination.
<ul style="list-style-type: none"> ■ 	If you leave the examination, loading it again requires another demo license.
<ul style="list-style-type: none"> ■ 	Example: You get 20 demo licenses. These are counted down to 0. You can then decide if you want to buy the license permanently, sect. 7.5, page 11 .
<ul style="list-style-type: none"> ■ Daily“ 	Demo license Use limited to a particular number of days.
Network server	Parent computer that manages the software on a network In this case, the Floating License Key is plugged into the network server and the licenses of the evaluation functions located thereon are managed.
Client computer	Computer at the user's workplace. In this case connected to an OCULUS device and to a network server. The examinations are carried out here usually.
Software options	Examination and evaluation function. The software options are displayed together in some windows and dialogs.



“Daily” and “Usage” demo licenses: With every floating license ordered, OCULUS also includes demo licenses for all other software options available at the time of delivery. The demo licenses can be found on your floating license key.

Demo licenses cannot be ordered separately.

3 Safety instructions

The working steps described in these instruction are a supplement to the corresponding devices. The safety regulations in the instruction manual of the corresponding devices apply.

- ➔ Read through these instructions.
- ➔ Read through the instructions for the device in question.

Pictogram used



Identifies important information about the product or its operation, which require special attention.

Information about the personnel

- ➔ Make sure that the Floating License Key is exclusively used by people who possess the knowledge, training and practical experience to ensure that work is carried out proficiently.

Subsequent operations may be carried out by the following people

- Users, trained retailers and network administrators:
 - Using the licenses of the Floating License Key, [sect. 7, page 7](#)
 - Ordering licenses, [sect. 7.4, page 9](#)
- Trained retailers and network administrators:
 - Integrating into the network, [fig. 8, page 20](#)

4 Designated use

The Floating License Key is an accessory for OCULUS devices. It provides licenses that are subject to payment for software options of the examination software, and manages these with the OcuLicenseServer software in a network.

This means an option can be used on several client computers, although not at the same time.

5 Program requirements

The following minimum requirements apply to the device software:

Device	Software version
Pentacam® /Pentacam® HR	1.20r10
Pentacam® AXL	1.20r18
Keratograph 5M	
Keratograph 4	2.5r10
Easygraph	
Twinfield® 2	
Centerfield® 2	
Easyfield® C	3.17r58
Easyfield® S	
Smartfield	
Binoptometer® 4P	V1.0.4.1320
Binoptometer® 3	V1.0.4.1229
Mesotest II	V1.0.4.1322
Mesotest II konkav	
HMC-Anomaloskop MR	V2.0.0.141
HMC-Anomaloskop R	

6 Mode of function

The Floating License Key can be used on a single computer as well as in a network. The Floating License Key operates with the OcuLicenseServer.

Usage on a single computer

Use the Floating License Key on the computer which is connected to the OCULUS device and on which the corresponding software is installed. Once you plug in the Floating License Key, all software options for the OCULUS device are available. For further information, see [sect. 7.1, page 7](#).

Usage in a network

You can use the software options on every network computer, when plugging in the Floating License Key into the Windows® network server. All software options for the OCULUS device are then available.

As soon as a user starts the OCULUS examination software, the client computer sends a corresponding request to the floating license server via the network connection. If the corresponding licenses are available, the user can use the associated software options for the OCULUS examination software.

The licenses are kept until the user shuts down the OCULUS examination software. Following this, the licenses are once again available for other client computers. For further information see [sect. 7.2, page 7](#).

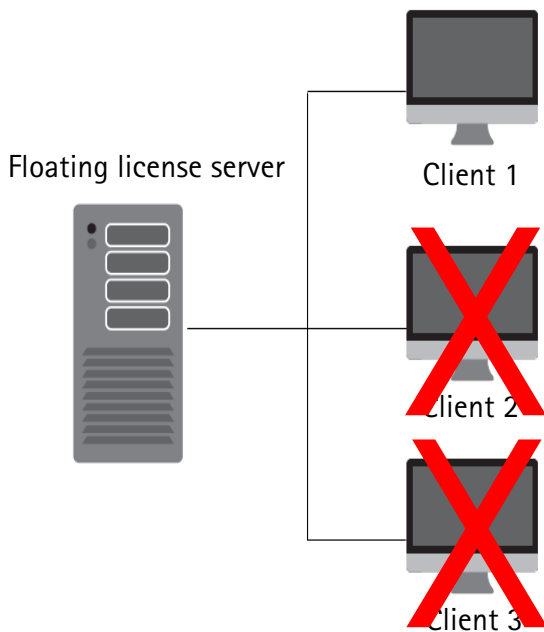


Fig. 6-1: Using a license via the floating license server

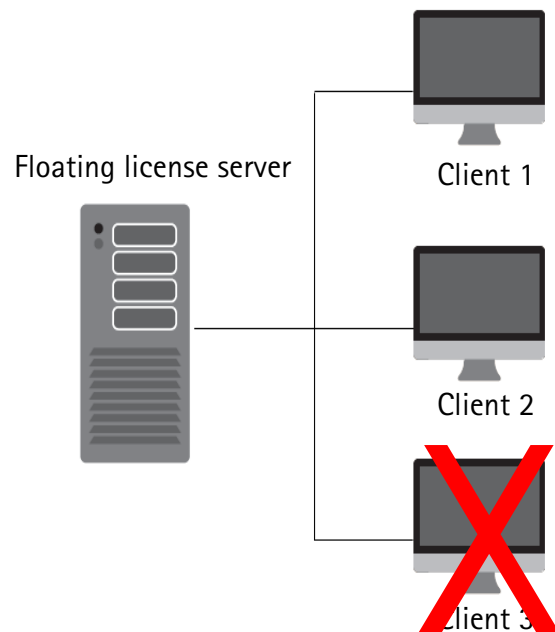


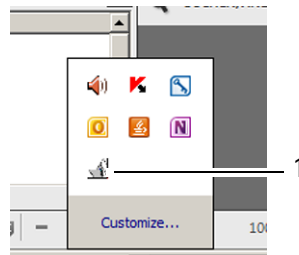
Fig. 6-2: Using two licenses via the Floating License Server

7 Using Floating License Key Licenses

The following steps may only be carried out by users.

7.1 Using the Floating License Key on a single computer

- ➔ Plug the Floating License Key into the computer which is connected to an OCULUS device and on which the corresponding software is installed.
- ➔ Start the examination software. The OcuLicenseServer software starts automatically. The icon is placed in the task bar.



1 Icon for the OcuLicenseServer

Fig. 7-1: Task bar: Open notification icons

All software options for the OCULUS device are active and available on the computer.

7.2 Using the Floating License Key in a network

The Floating License Key provides the ordered licenses for your client computer via the OcuLicenseServer software, [sect. 7.4, page 9](#).

Precondition:

- the Floating License Key is connected to the Floating License Server¹ and
 - the client computer is connected with the Floating License Server, [fig. 6-2, page 6](#)
- ➔ Client computer: Start the device software.

The examination software automatically accesses the floating license server. If a license is available, you can work with it.

To install a floating license server, see [sect. 8, page 20](#).

1.The OcuLicenseServer software must be installed on the server (and the FLK must be plugged in). This makes the server a floating license server. But this can also be any computer on the network. Prefer the network server because it is always on.

If all licenses are being used by other client computers, the following message is displayed:

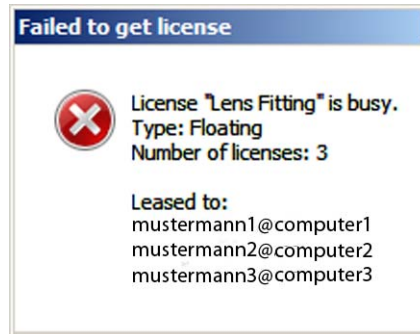


Fig. 7-2: Message about used licenses

Wait until a license is available.

7.3 Using demo licenses

OCULUS uses the Floating License Key to provide you with demo licenses for all options that match your device. You can use demo licenses locally on a single computer or in a network via the Floating License Server.

➔ Client computer: Start the device software.

The device software automatically accesses the floating license server. It displays how many demo licenses are still enabled.

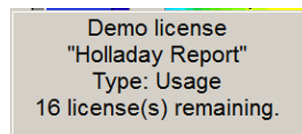


Fig. 7-3: Message about demo licenses still available

The following message is displayed if all demo licenses for a software option are used up:



Fig. 7-4: Message about demo licenses used up

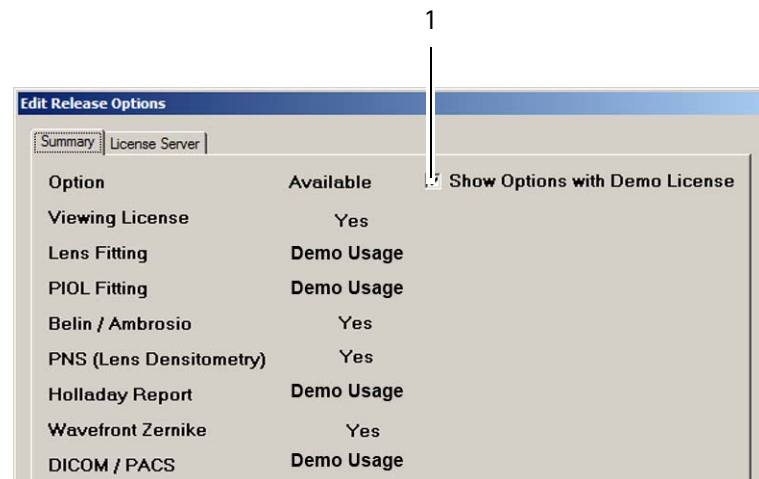
If you want to use the license permanently, you must order it, [sect. 7.4, page 9](#).

Hiding demo function display

You can hide the demo function display.

When the demo license is expired, you can hide the functions in the display menu for a clearer view.

- ➔ Start up the device software containing the floating license key on the computer.
- ➔ Settings > Enable options.
The "summary" window opens.



1 "Display options with demo license" checkbox

Fig. 7-5: Demo licenses displayed

- ➔ Uncheck the box (1).
- ➔ The demo licenses will no longer be displayed as demo licenses in the "available" column.

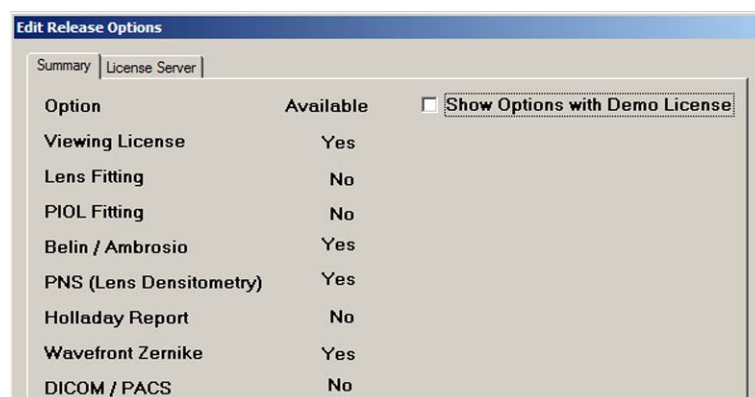


Fig. 7-6: Demo licenses not displayed

7.4 Checking licenses

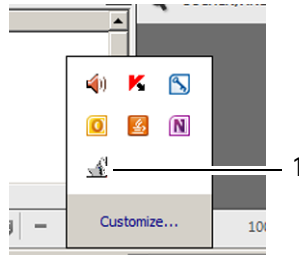
If you use your floating license key on the device computer, once the OCULUS device software is booted up for the first time, the OcuLicenseServer will run in the background. If your floating license key is installed on a server, this is where your OcuLicenseServer software will be located.

You can use this software to check which licenses you can use and how to order additional licenses.



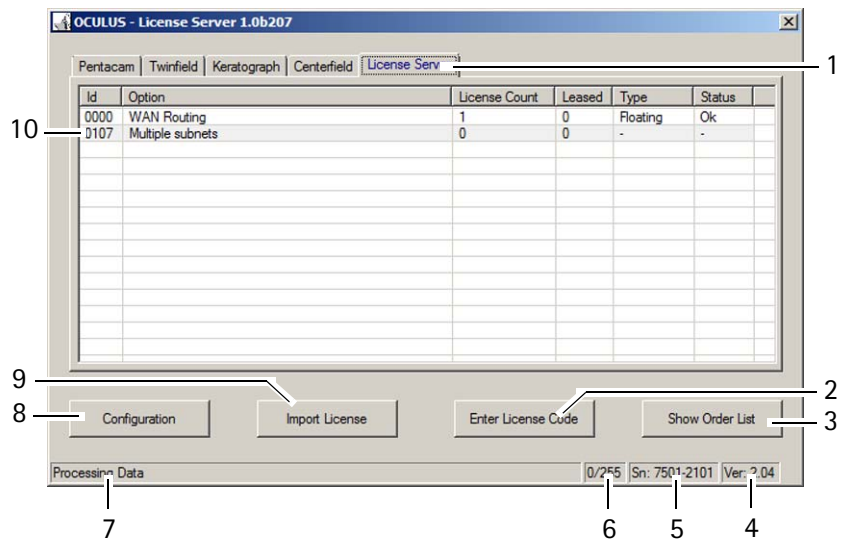
If the Floating License Key is plugged into the Floating License Server, you may have to contact the network administrator to check and order licenses.

➔ Click the icon for the OcuLicenseServer.



1 Icon for the OcuLicenseServer
Fig. 7-7: Task bar

The following window appears:



- 1 Tabs for devices and licenses
- 2 [Enter License Code] button
- 3 [Show Order List] button
- 4 Display of version number of the Floating License Key
- 5 Display of serial number of the floating license key
- 6 Display of logged-on Users
- 7 Display of last action
- 8 [Configuration] button
- 9 [Import License] button
- 10 List of available licenses

Fig. 7-8: "OCULUS - License Server" window

All licenses that are activated on the Floating License Key are now available. If this is not the case, it may has to be configured by the network administrator.



If you disconnect the Floating License Key from the USB socket, the OcuLicenseServer software will no longer function and the client computers can no longer access the software options.

- ➔ Leave the Floating License Key plugged into the floating license server.

7.5 Ordering software options

You can use the Floating License Key to prepare/organise orders for more licenses. Here, you can adapt the licenses of the software options for your specific requirements. A corresponding order list is prepared, [fig. 7-7, page 10](#).

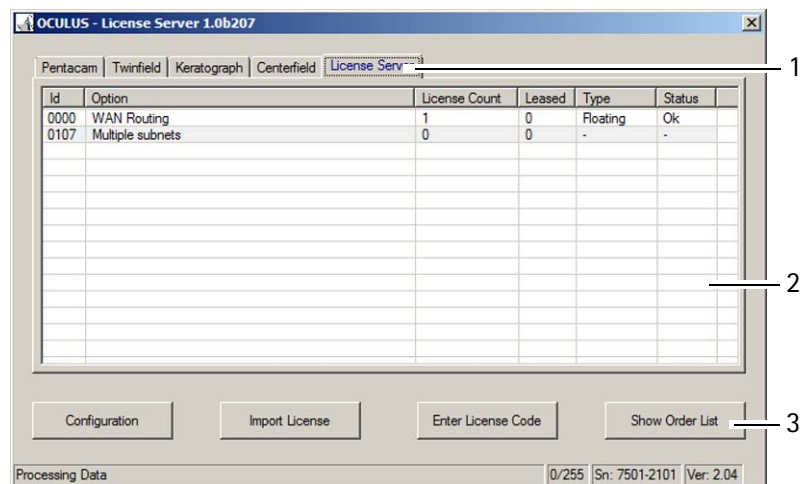


"Daily" and "Usage" demo licenses: With every floating license ordered, OCULUS also includes demo licenses for all other software options available at the time of delivery. The demo licenses can be found on your floating license key.

Demo licenses cannot be ordered separately.

7.5.1 Generating an order list

- ➔ Check whether the Floating License Key is connected.
- ➔ Open the window of the OcuLicenseServer software.



1 Tab for devices

2 Selected software option

3 [Show Order List] button

Fig. 7-9: Selecting software option

- ➔ Select a tab for the device for which you want to order a software option.
- ➔ Select a software option.



If you double-click a software option, you can then change the number of software options or serial numbers here.

If you later decide against a software option, you can enter a "0" in the column "Number".

Use the [Close] button (1) to close the order list.

Use the [Clear] button (2) to delete all entries in the order list.

➔ Press the [Create Order file] button (3).

The corresponding file is created. The following window appears:

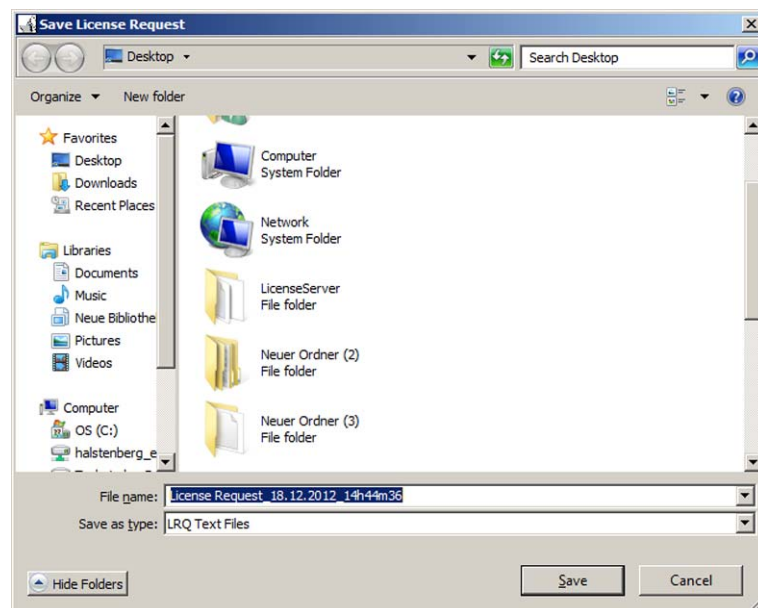


Fig. 7-12: Saving the order list under its own path

➔ Select a storage location for the file.

For customers in Germany

➔ Send the file by e-mail to OCULUS.
service@oculus.de

For international customers

➔ Send the file by e-mail to your authorized distributor.

For international distributors

➔ Send the file by e-mail to OCULUS.
service@oculus.de

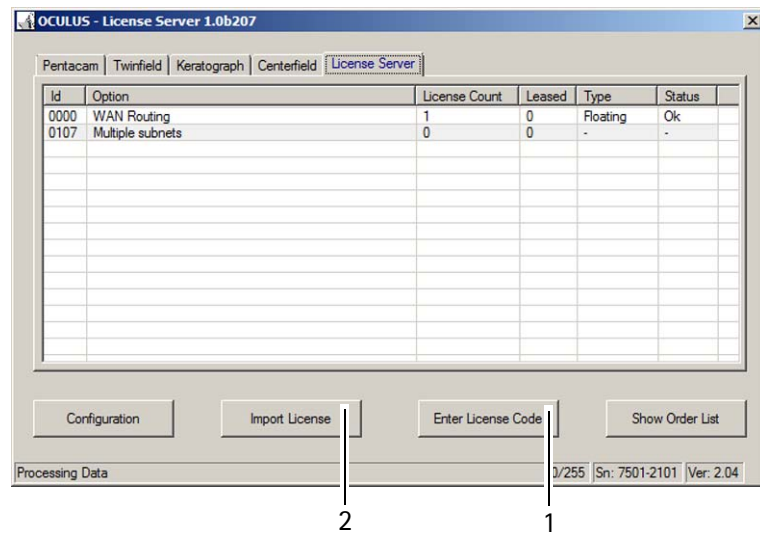
7.5.2 Activating new software options

Once the order has been accepted, you will receive a license code file (.lic) from OCULUS. You can import the licenses or enter by code.

Activating software options by import

You can "load up" the floating license key with the license code file (.lic). Then you can use the ordered software options.

- ➔ Check whether the Floating License Key is connected.
- ➔ Open the window of the OcuLicenseServer software [fig. 7-7, page 10](#).



1 [Enter License Code] button

2 [Import License] button

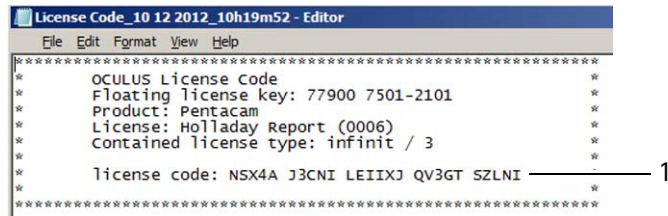
Fig. 7-13: Importing license

- ➔ Press the [Import License] button (1).
- ➔ Double-click the license code file (.lic).
The software options are activated.

Activating software option by code entry

You can activate the software options using a license code, if you are unable to transfer the license code file (.lic) to the Floating License Server.

- ➔ Open the license code file (.lic) that you have received from OCULUS. Use a standard text editor to do this, if necessary



```

License Code_10 12 2012_10h19m52 - Editor
File Edit Format View Help
*****
* OCULUS License Code *
* Floating license key: 77900 7501-2101 *
* Product: Pentacam *
* License: Holladay Report (0006) *
* contained license type: infinit / 3 *
* license code: NSX4A J3CNI LEIIXJ QV3GT SZLNI *
*****

```

1 License code

Fig. 7-14: Selecting license

- ➔ Change to the window of the OcuLicenseServer software.
- ➔ Press the [Enter License Code] button, [fig. 7-13, page 14, no. 1](#). The following prompt appears:

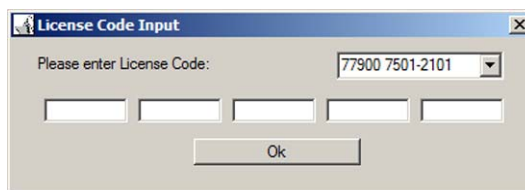


Fig. 7-15: Entering license code



If several floating license keys are connected:
Select the serial number of the Floating License Key for which you want to order the license.

- ➔ Enter the license code.
You need to enter the license code only once, even if you have ordered more licenses for one software option.
- ➔ Confirm with [OK].
The new software option is activated.

7.5.3 Telephone order

It is also possible to order licenses over the phone. For this you require an order file, ["Generating an order list" on page 11](#).

➔ Open the order file. Use a standard text editor to do this, if necessary

```

License Request_18.12.2012_14h44m36 - Notepad
File Edit Format View Help
*****
OCULUS License request
Floating license key: 77900 7501-2101 ----- 1
Product: Pentacam
License: Holladay Report (0006)
actual license type: infinit / 3
requested license type: infinit / 1
order code: 3RV5I CLF3Q SZZJPY PJKUL M8UBV ----- 2
i-key: WELQZ REXFR JRRLIV RSMUQ UBMvM ----- 3
*****
OCULUS License request
Floating license key: 77900 7501-2101 ----- 4
Product: Pentacam
License: 70812 Cataract (0008)
actual license type: infinit / 2
requested license type: infinit / 2
order code: EQDDV N855T DKSTMU RY7ZD W3CJM ----- 5
i-key: WELQZ REXFR JRRLIV RSMUQ UBMvM ----- 6
*****
1 Serial number Floating License Key 4 Serial number Floating License Key
2 Order code 5 Order code
3 i-key 6 i-key
    
```

Fig. 7-16: Order file

- ➔ Specify the following data over the phone:
- order code (2) or (5)
 - i-key (3) or (6) for product identification
 - Floating License Key number that is on the key (1) or (4)

OCULUS will provide you with the license code.

Then you can activate the software options using a license code:

- ➔ Change to the window of the OcuLicenseServer software, [fig. 7-13, page 14](#).
- ➔ Press the [Enter License Code] button, [fig. 7-13, page 14, no. 1](#).
- The following prompt appears:

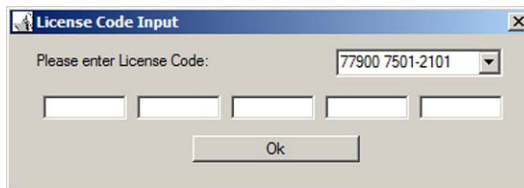


Fig. 7-17: Entering license code



If several floating license keys are connected:
 Select the serial number of the Floating License Key for which you have ordered the license.

- ➔ Enter the license code.
 You need to enter the license code only once, even if you have ordered more licenses for one software option.
- ➔ Confirm with [OK].
 The new software option is activated.

Minimizing software display

The OcuLicenseServer software always runs in the background. If you wish to hide the software, you can minimize the software display.

- ➔ Press the close icon "x".

The following prompt appears:

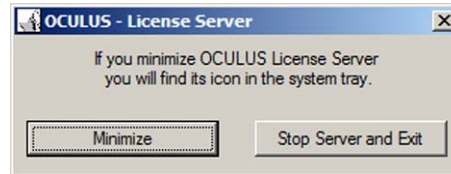
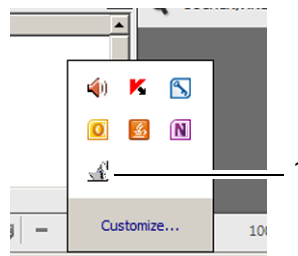


Fig. 7-18: Minimizing OcuLicenseServer

- ➔ Press the [Minimize] button.

The icon for the OcuLicenseServer is placed in the task bar.



1 Icon for the OcuLicenseServer

Fig. 7-19: Using OcuLicenseServer

- ➔ Double-click the icon for the OcuLicenseServer (1) in order to make additional settings.

Clicking the right mouse button displays a shortcut menu.

7.6 Displaying the Licenses in the Device Software

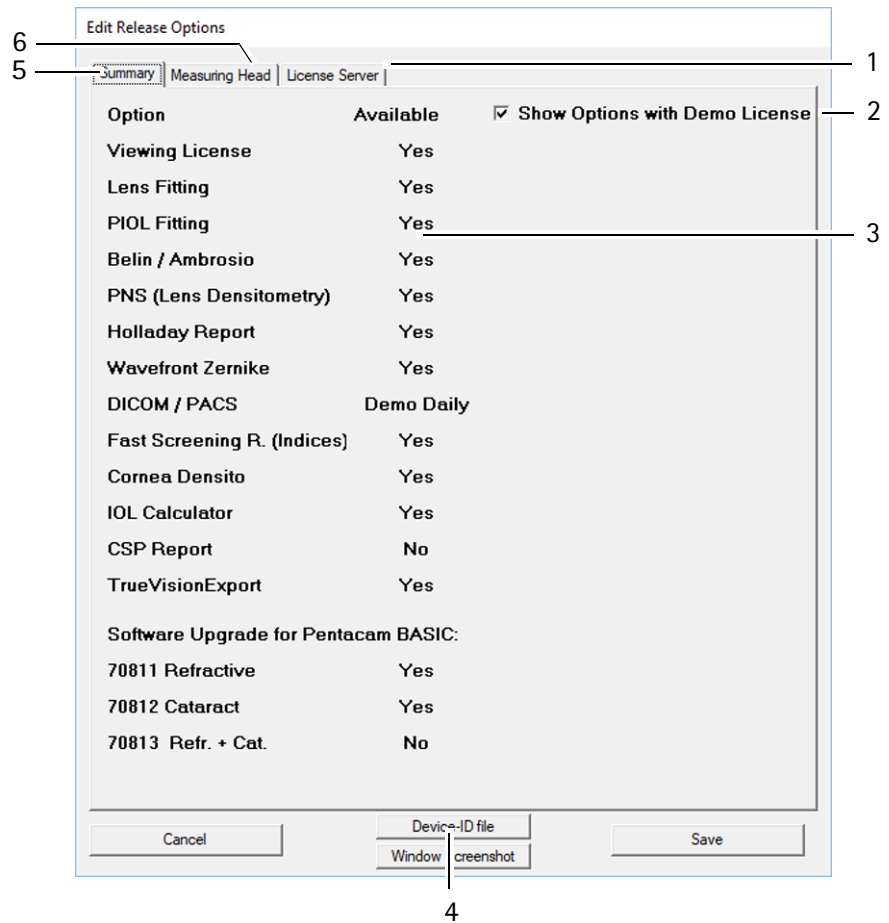
You can display the licenses for the software options in the device software.

The steps are shown using the example of Pentacam®.

- ➔ Start the device software on the computer (network server or client computer) in which the floating license key is inserted.

➔ Settings > Release Options

The "Summary" screen appears.



- | | |
|---|--------------------------|
| 1 "License-server" tab | 4 Device-ID file] button |
| 2 Checkbox for demo license "License Key" | 5 "Summary" tab |
| 3 Status display "Available" | 6 "Measuring Head" tab |

Fig. 7-20: Registerkarte „Zusammenfassung“ der Optionen-Freischaltung

The display of or number of tab panels depends, for example on whether a Floating License Key is linked to the program and whether a license key is inserted.

All Floating License Key-specific options are displayed in this window. The status indicator "Available" (5) lists the existing and the available licenses:

Yes: License for the option is released

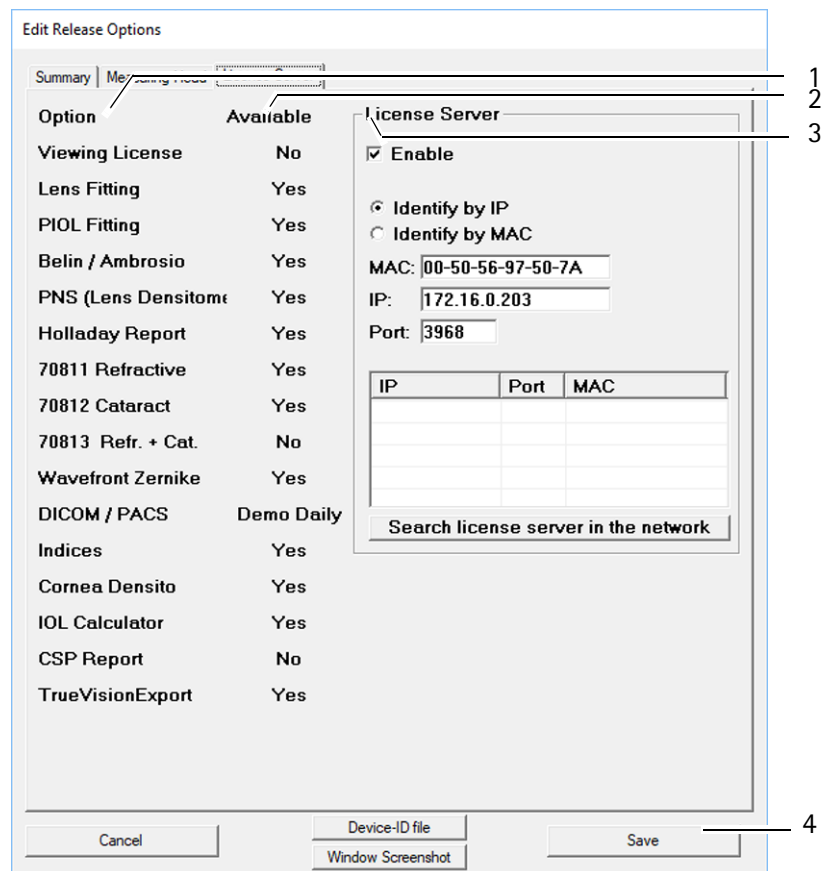
No: License for the option is not released

The "License Key" (2) and "Measuring Head" (6) tab panels depend on the device configurations, see [documentation of device](#).

The "License Server" (1) tab panel tab panel gives information about the examination functions in the network.

- ➔ Settings > Release Options > "Measuring Head" tab panel > License Server

The following screen appears.



Option	Available
Viewing License	No
Lens Fitting	Yes
PIOL Fitting	Yes
Belin / Ambrosio	Yes
PNS (Lens Densitometry)	Yes
Holladay Report	Yes
70811 Refractive	Yes
70812 Cataract	Yes
70813 Refr. + Cat.	No
Wavefront Zernike	Yes
DICOM / PACS	Demo Daily
Indices	Yes
Cornea Densitometry	Yes
IOL Calculator	Yes
CSP Report	No
TrueVisionExport	Yes

License Server

Enable

Identify by IP
 Identify by MAC

MAC:

IP:

Port:

IP	Port	MAC

1 List of options

2 Option release information

3 "License Server" box

4 Buttons [Cancel] and [Save]

Abb. 7-21: "License Server" tab

The "Options" list (1) gives information about the available software options.

You need the "License Server" (3) if the Floating License Key list is not used directly on the device computer. Detailed information can be found in [sect. 8.4, page 28](#). For this action, you should contact trained distributors or the network administrator.

8 Installing in a network

This chapter is for trained retailers and network administrators.

As soon as a user starts the OCULUS examination software, the client computer sends a corresponding request to the floating license server via the network connection. If the corresponding licenses are available, the user can use the associated software options for the OCULUS examination software.

The licenses are kept until the user shuts down the OCULUS examination software. Following this, the licenses are once again available for other client computers.

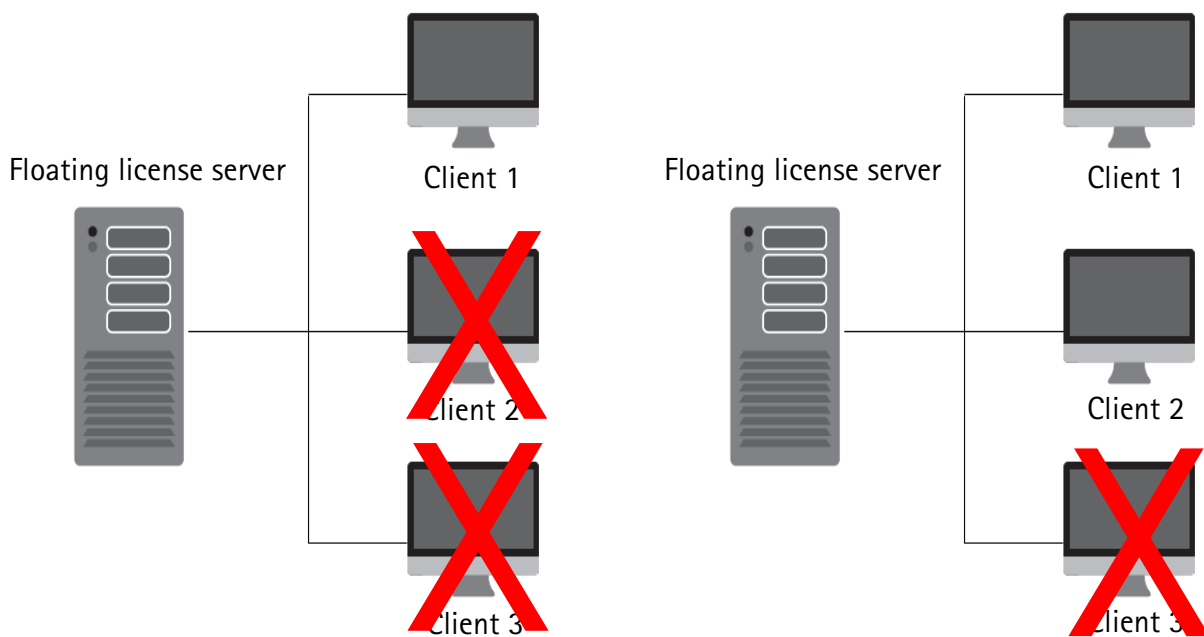


Fig. 8-1: Using a license via the floating license server

Fig. 8-2: Using two licenses via the floating license server



If you wish to split the licenses between two networks that are not connected together, you must use a second Floating License Key.

→ Call OCULUS Service for this purpose.

If you wish to use the licenses in different sub networks, you need to use the Multiple Subnet License, [sect. , page 30](#).

8.1 Installing software

The OcuLicenseServer software can be found on the USB flash drive containing the device software.

Install the OcuLicenseServer software as a Floating License server on the server. All other computers are connected to the floating license server via the network as client computers.

After installing the software, you need to configure the OcuLicenseServer. If necessary, you need to configure the firewall.

➔ Define one computer in the network as the floating license server.



Any computer on the network can be used for this function. If there is a server located on your network, select it as the floating license server, since the server normally runs continuously.

➔ Connect the Floating License Key to a USB socket.



If you use the Floating License Key direct on an application computer instead of in a network, the software will be installed automatically and you can omit the following steps

Please note that the licenses on the Floating License Key can then only be used on a single computer

➔ Double-click "OcuLicenseServer_Setup.exe" to start the installation.



Fig. 8-3: Starting installation

➔ Click [Next].

The following window appears:

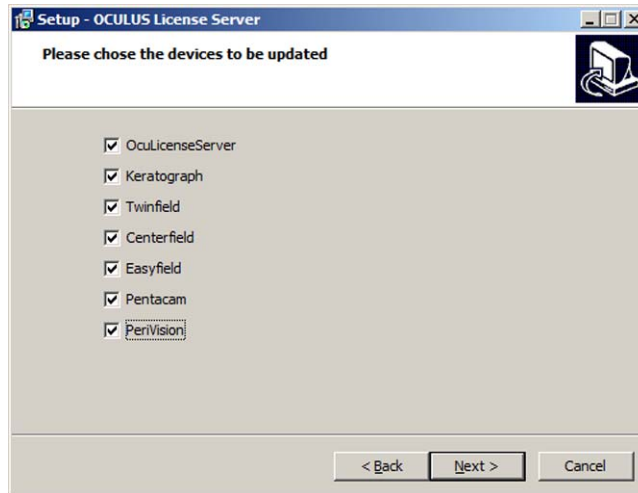


Fig. 8-4: Active installations

All existing OcuLicenseServer installations are displayed and are active. The respective check box is enabled.

If you wish to deselect an installation, disable the corresponding check box.

➔ Click [Next].

The following window appears:

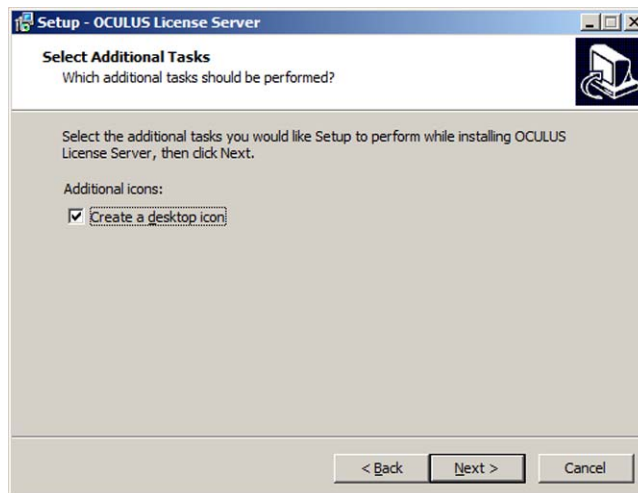


Fig. 8-5: Installing

➔ If you wish to create a desktop icon, enable the check box.

➔ Click [Next].

The following window appears:

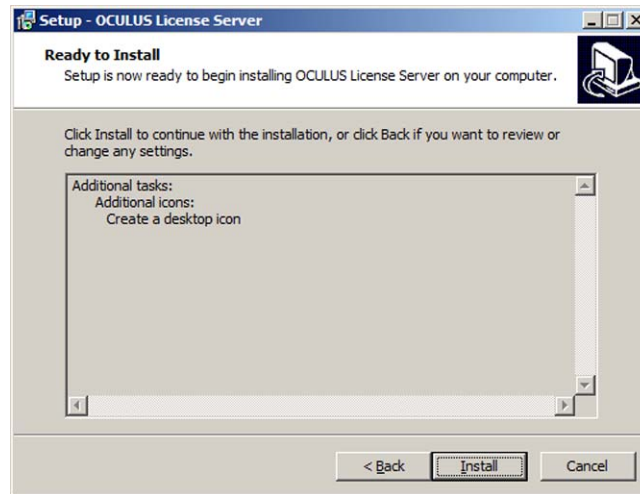


Fig. 8-6: Installing

➔ Click [Install].

The following window appears:



Fig. 8-7: Completing installation

➔ Click [Finish] to complete the installation.

The OcuLicenseServer software is now installed on your computer.



If the OcuLicenseServer software does not start, the Floating License Key is possibly not plugged in.

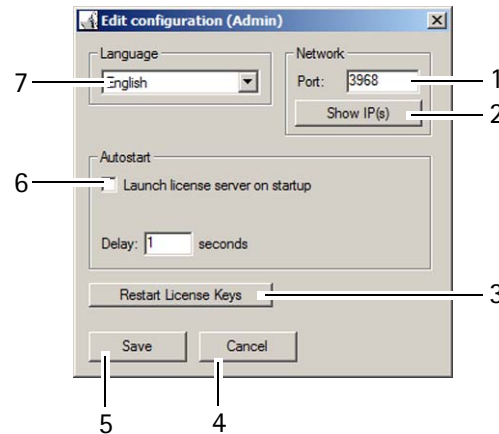
➔ Plug in the Floating License Key, if applicable. Restart the software.

8.2 Configuring OcuLicenseServer

Before you can use the licenses, you may need to configure the OcuLicenseServer

➔ Press the [Configuration] button, (fig. 7-8, page 10, no. 8).

The following window is displayed:



- | | | | |
|---|----------------------------------|---|-------------------------|
| 1 | Box for entering the port number | 5 | [Save] button |
| 2 | [Show IP(s)] | 6 | "Autostart" group box |
| 3 | [Restart License Keys] button | 7 | Language drop-down list |
| 4 | [Cancel] button | | |

Fig. 8-8: Configuring license

8.2.1 Changing port

The OcuLicenseServer software usually communicates via port 3968. Only change the port e.g. if there are problems with the overlapping with other programs.

- ➔ Enter the required port number (1).
- ➔ Confirm with [Save].
- ➔ Shut down and restart the OcuLicenseServer software.

The selected Floating License Key is used.



If you change the port, you have to change it on every computer connected to the OcuLicenseServer. Make port settings in the respective examination software.

8.2.2 Displaying IP Address

If you wish to have the local IP addresses of the existing network adapter displayed,

- ➔ click on the [Show IP (s)] button (2).

8.2.3 Setting autostart

In the "Autostart" group box (6), it is possible to define properties for the OcuLicenseServer software to start automatically.

- ➔ Enable the [Launch license server on startup] check box to have the OcuLicenseServer software started automatically when the floating license server is switched on.

If the OcuLicenseServer software does not detect a Floating License Key when it starts, it is shut down immediately.

If your system links to the Floating License Key with a time delay, you can use the "Delay" box to set the access delay of the OcuLicenseServer software.

8.2.4 Selecting language

- ➔ Select a language (7).
- ➔ Confirm with [Save].
- ➔ Shut down and restart the OcuLicenseServer software.
The language is changed.

8.2.5 Restarting Floating License Key

You can restart the Floating License Key, if required,

- ➔ Press the [Restart License Keys] button (3).

8.2.6 Saving settings

- ➔ Press [Save] to save the settings.

If you press the [Cancel] button or the close icon, this closes the configuration window without saving the settings.



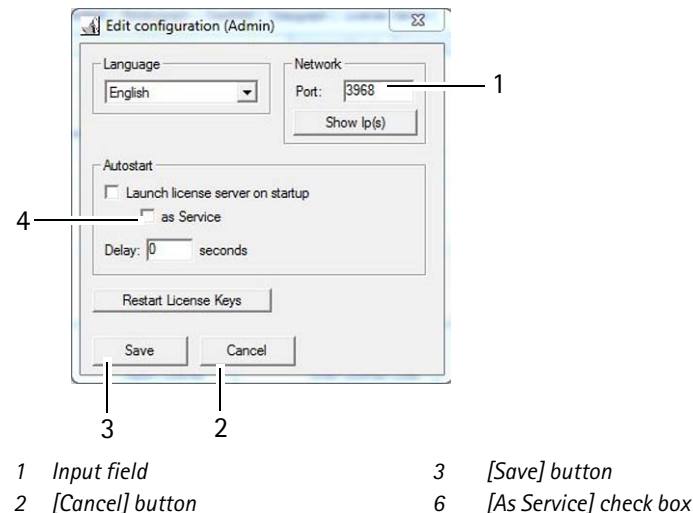
Demo licenses: e.g. after a restart, the commenced day licenses expire, [sect. 7.3, page 8](#).

8.2.7 Registering as service

You can register the Floating License Key as service if several users log in to this computer (server).

- ➔ Make sure that you are logged in as administrator.
- ➔ Press the [Configuration] button, (*fig. 7-8, page 10, no. 8*).
- ➔ Enter the letters "olsd".

The following window is displayed:



- | | | | |
|---|-----------------|---|------------------------|
| 1 | Input field | 3 | [Save] button |
| 2 | [Cancel] button | 6 | [As Service] check box |

Fig. 8-9: Configuring service

- ➔ Enable the [As Service] check box (4).
- ➔ Confirm with [Save] (3).
- ➔ Close the OcuLicenseServer.
- ➔ Start the service by clicking the symbol "OculusLicenseServer(Service)".

8.3 Configuring the firewall

Make sure that communication to the OcuLicenseServer is not blocked by the firewall.

You can generally allow firewall access to the OcuLicenseServer in the settings menu. You can also configure the ports as in [sect. 8.3.1, page 26](#).

If required, consult the firewall documentation or ask the system administrator for support.

8.3.1 Configuring ports

- ➔ Make sure that the following ports are enabled:
 - 3968 TCP or port configured manually (see [sect. 8.2.1, page 24](#))
 - 51371 UDP
 - 51372 UDP

8.3.2 Allowing application-based communication

When starting the OcuLicenseServer for the first time, it might be the case that the network communication is blocked and a message appears. This message depends on:

- the operating system used
- a firewall of a different supplier which has been additionally installed

The access to the network can be configured in this window.

- Allow network access

Example: Windows 7:



Fig. 8-10: Firewall

- ➔ Press the [Allow Access] button (5).

8.4 Connecting the client computer with the Floating License Server



The method for accessing the configuration menu for the software options depends on the device and may be different from the example shown. The procedure is shown taking the example of the Pentacam[®].

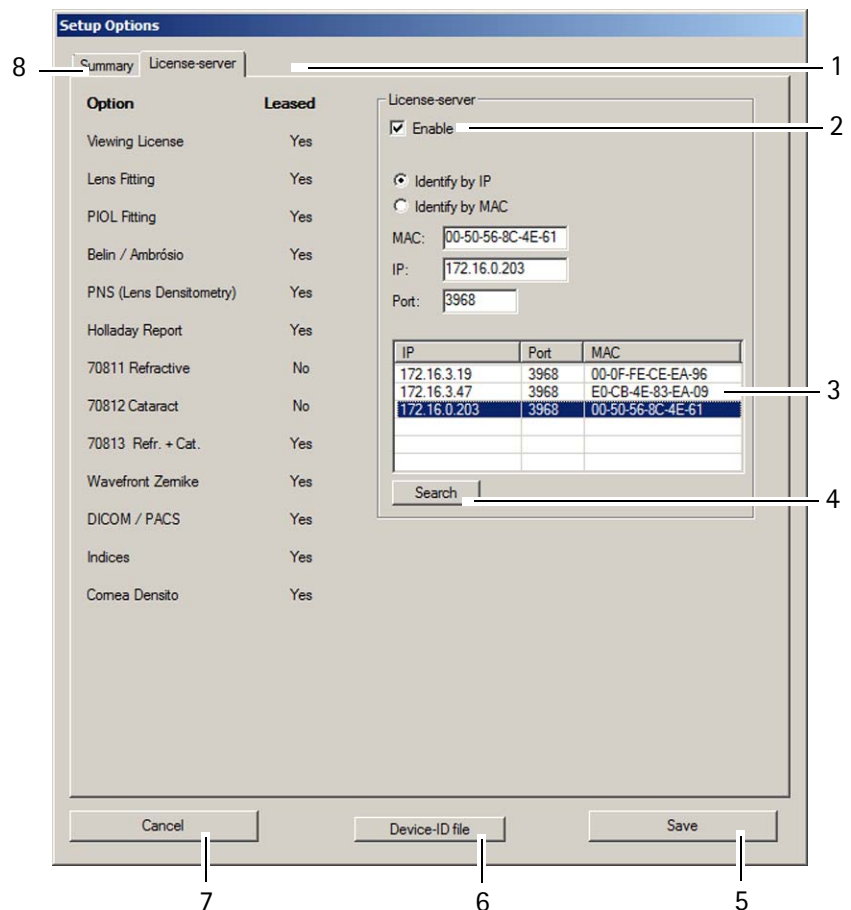
→ Read the documents for your OCULUS device for information.

→ Start the OCULUS device software.

→ Select Settings > ReleaseOptions.

An overview of the available licenses is displayed.

→ Select the "License server" tab.



1 [License server] tab

2 [Enable] check box

3 List with IP addresses of the servers found

4 [Search] button

Fig. 8-11: "Setup options" window

5 [Save] button

6 [Device-ID file] button

7 [Cancel] button

8 Tab for the license overview

→ Enable the [Enable] check box (2).

→ Press the [Search] button (4).

- ➔ Select the required entry from the list of servers found (3).
The server settings are transferred to the "MAC", "IP" and "Port" boxes.



If the Floating License Server obtains its IP address automatically (DHCP is activated), you must activate the [Identify by MAC] button.

In this case, ports 51371 and 51372 for the UDP protocol must be enabled by your firewall. You can use these ports for the search function, too. It is also possible to enter the IP address manually. In order to display the IP address under which the LicenseServer can be reached, see [fig. 8-8, page 24, no. 2](#).

- ➔ Press the [Save] button (5). You are prompted to restart the device.
After the restart, the license on the client computer is integrated in the network. The linked computers and licenses are displayed.
- ➔ Select the "Summary" tab to display the available licenses.

8.5 Access to the Floating License Key from outside the network

Access type	Description
WAN routing	No function at present You can access the Floating License Key from external computers via the Internet

9 Manufacturer's and service address

Additional information is available from our Service or from our authorised agencies. Manufacturer's and service address:

Germany:

OCULUS Optikgeräte GmbH
Münchholzhäuser Strasse 29
D-35582 Wetzlar

Phone: +49 (0) 641 2005-0

Fax: +49 (0) 641 2005-255

Email: sales@oculus.de

www.oculus.de



USA:

OCULUS, Inc.
17721 59th Avenue NE
Arlington, WA 98223

Tel: 425-670-9977

Fax: 425-670-0742

www.oculususa.com



Manufacturer and Service Address

Deutschland:

OCULUS Optikgeräte GmbH
Münchholzhäuser Straße 29
D 35582 Wetzlar
Tel.: +49 (0) 641/2005-0
Fax: +49 (0) 641/2005-255
E-Mail: sales@oculus.de
www.oculus.de

USA:

OCULUS, Inc.
17721 59th Avenue NE
Arlington
WA 98223-1337
Tel. +1 425-670-9977
Fax +1 425-670-0742
E-mail: sales@oculususa.com
<http://www.oculususa.com>